

## THREE EMBARCADERO CENTER

# Suite 2340

FLOOR 23 | 3,744 SF

### DATE AVAILABLE:

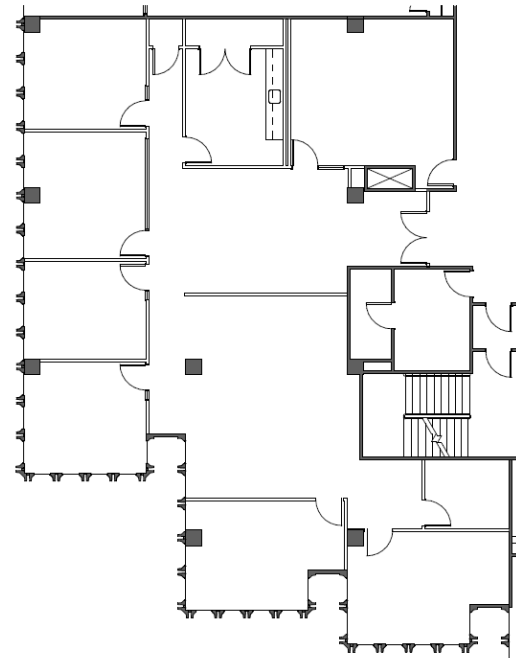
November 2025

### FLOOR ORIENTATION:

Southwest

### FEATURES:

- Nice city outlooks
- (7) Private offices
- Conference room
- Open area
- Kitchen
- IT/Storage room



### FOR MORE INFORMATION, CONTACT:

**CHRISTINE YUEN**  
SVP, Leasing  
415.772.0764  
cyuen@bxp.com

**GAIL LADA**  
Director, Leasing  
415.772.0766  
glada@bxp.com

**ANDREW BLAND**  
Director, Leasing  
415.772.0761  
abland@bxp.com

**KIMBERLY WONG**  
Leasing Representative  
415.772.0765  
kwong@bxp.com