

THREE EMBARCADERO CENTER

Suite 2330

FLOOR 23 | 4,218 SF

DATE AVAILABLE:

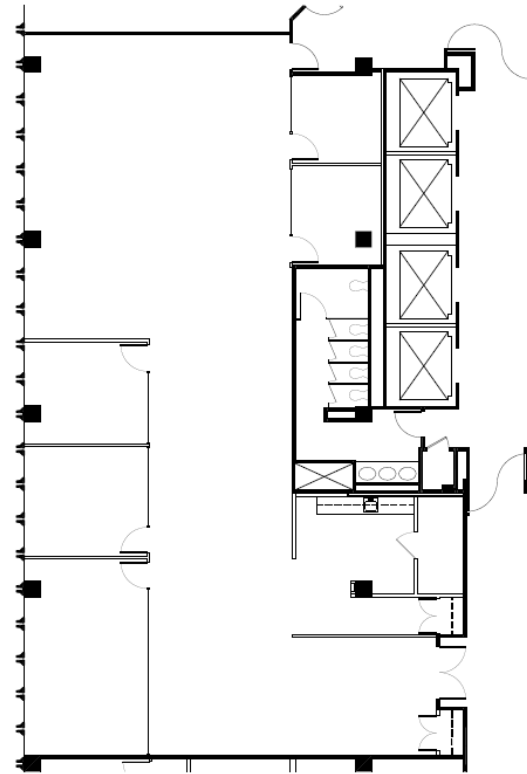
Immediate

FLOOR ORIENTATION:

South

FEATURES:

- Nice city outlooks
- (4) Private offices
- Open area
- Large conference room
- Open break room
- IT/Storage room
- Double door-entry



FOR MORE INFORMATION, CONTACT:

CHRISTINE YUEN
SVP, Leasing
415.772.0764
cyuen@bxp.com

GAIL LADA
Director, Leasing
415.772.0766
glada@bxp.com

ANDREW BLAND
Director, Leasing
415.772.0761
abland@bxp.com

KIMBERLY WONG
Leasing Representative
415.772.0765
kwong@bxp.com