



EMBARCADERO CENTER



Property Features

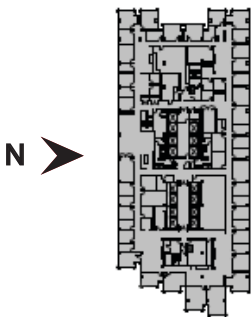
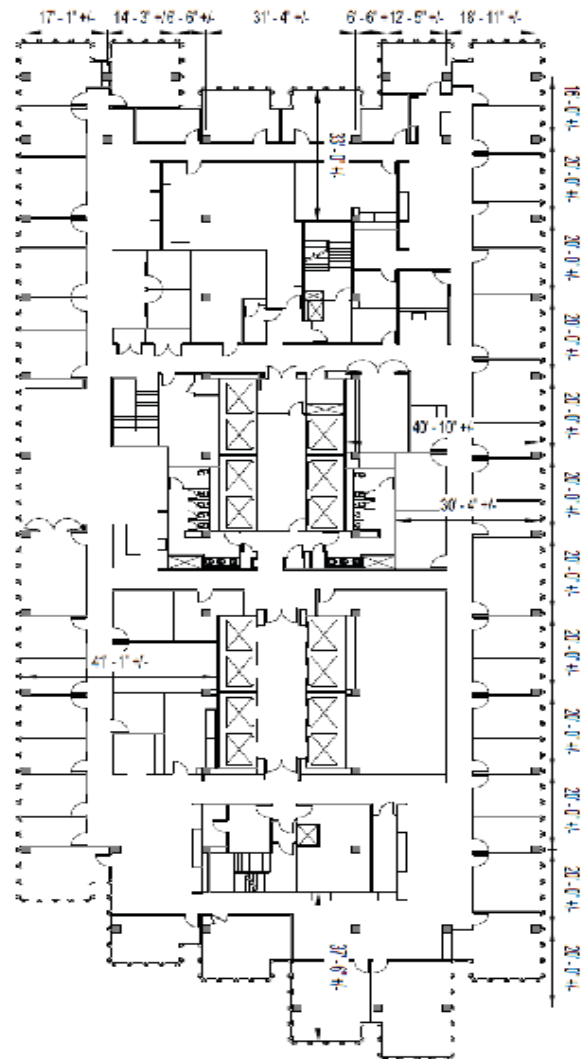
- Four Building Class A Complex
- Centrally located in the Financial District with 360 degrees of spectacular views
- Retail amenities including shops, restaurants, fitness facilities, a 7-screen cinema, and a state-of-the-art Conference Center
- Adjacent to the Embarcadero waterfront and walking distance to landmark locations – Ferry Building, Exploratorium, Pier 39 and AT&T Park
- Close proximity to public transportation: BART, MUNI, East Bay and North Bay Ferries, Cable Car, F-line, and the Transbay Transit Center



Available Space

Three Embarcadero Center
Suite 1000
25,524 SF

- Nice views
- Fifty-three private offices (Thirteen corner offices)
- Break room
- Work/copy rooms
- Storage/IT Rooms
- Interconnecting stairway to Suite 900
- Can be combined with Suite 900 for a total of 51,048 SF
- Available April 2026



For More Information, Contact:

Christine Yuen
Senior Vice President, Leasing
415.772.0764
cyuen@bxp.com

Gail Lada
Leasing Manager
415.772.0766
glada@bxp.com

Kimberly Wong
Leasing Representative
415.772.0765
kwong@bxp.com

