



## EMBARCADERO CENTER



### Property Features

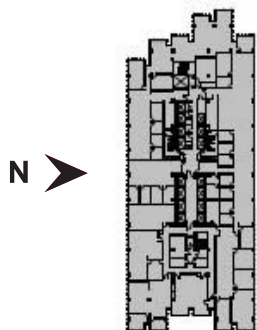
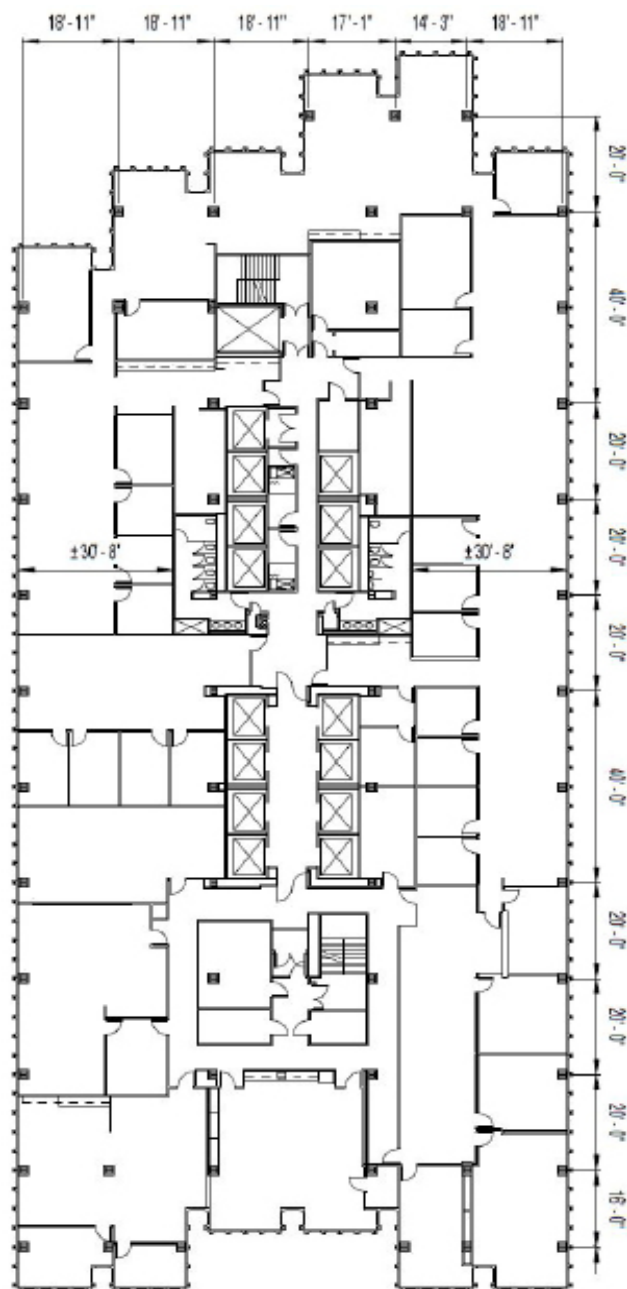
- Four Building Class A Complex
- Centrally located in the Financial District with 360 degrees of spectacular views
- Retail amenities including shops, restaurants, fitness facilities, a 7-screen cinema, and a state-of-the-art Conference Center
- Adjacent to the Embarcadero waterfront and walking distance to landmark locations – Ferry Building, Exploratorium, Pier 39 and AT&T Park
- Close proximity to public transportation: BART, MUNI, East Bay and North Bay Ferries, Cable Car, F-line, and the Transbay Transit Center



## Available Space

Two Embarcadero Center  
Suite 200  
25,956 SF

- Twenty seven private offices
- Two conference rooms
- Open area
- Break room
- Work/copy rooms
- IT/storage rooms
- Available January 2025



### For More Information, Contact:

Christine Yuen  
Senior Vice President, Leasing  
415.772.0764  
[cyuen@bxp.com](mailto:cyuen@bxp.com)

Gail Lada  
Leasing Manager  
415.772.0766  
[glada@bxp.com](mailto:glada@bxp.com)

Kimberly Wong  
Leasing Representative  
415.772.0765  
[kwong@bxp.com](mailto:kwong@bxp.com)

