

ONE EMBARCADERO CENTER

Suite 1310

FLOOR 13 | 3,054 SF

DATE AVAILABLE:

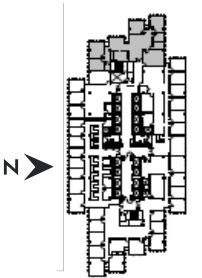
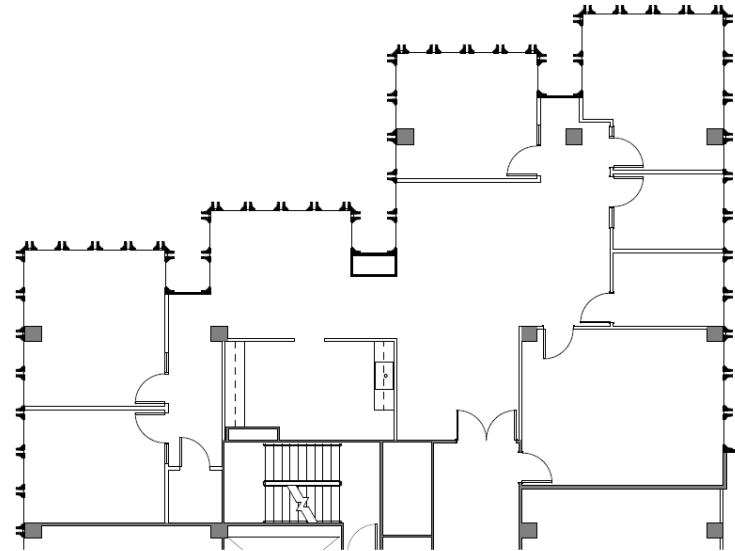
Immediate

FLOOR ORIENTATION:

West

FEATURES:

- City views
- (6) Private offices
- (3) Corner offices
- Conference rooms
- Break room
- Work/Copy area
- IT/Storage room
- Double door-entry



FOR MORE INFORMATION, CONTACT:

CHRISTINE YUEN
SVP, Leasing
415.772.0764
cyuen@bxp.com

GAIL LADA
Director, Leasing
415.772.0766
glada@bxp.com

ANDREW BLAND
Director, Leasing
415.772.0761
abland@bxp.com

KIMBERLY WONG
Leasing Representative
415.772.0765
kwong@bxp.com